

Browser-managed Access Control and Telephone Entry Solutions



e3 Tele Entry Systems



e3 Essential & Elite Systems

Comprehensive embedded OS and browser-managed access systems

e3 ACCESS CONTROL SERIES

Out-of-the-box Ready Access Control



Managed and Self-Managed, Embedded Browser-Managed Access Control & Telephone Entry Systems with optional Remote Management Console.

The proven e3-Series delivers faster set-up, enhanced features, and scalability with tens of thousands systems installed. These feature-rich, self-contained access systems are designed for small & mid-sized applications where users need to secure their facilities, manage access of personnel, create and analyze reports, and monitor the system remotely.

The e3-Series' comprehensive wizard is fast and intuitive, saving significant set-up time. The latest addition to the e3 family are the Entry 4.3" models which provide access control and telephone entry all-in-one, designed for single and multi-tenant applications. All e3 systems share one common database and programming interface.



Out-of-the-box ready:

e3 systems do not require PC or software to install. The embedded Linux OS and common hardware platform provide the ideal solution at the right price and optimum performance without the indirect soft costs of other systems.. Embedded MySQL enables quick and easy set-up via integrated tools for data import. Many of our expansion modules and accessories offer the right specifications to fit any system design. Design provides long term reliability and reduced customer support issues.



Scalable for any small and mid-sized application:

Whether you are commercial, industrial, medical, retail, hospitality or other businesses where users need to secure their facilities, e3 systems are perfect for you. The addition of multiple licenses can expand typical access control systems far beyond their normal parameters and allow coverage of a wide variety of applications. Common hardware and one code-based platform allow easy feature deployment via licensing. e3 system is scalable 128 doors, 256 readers, 1K – 20K users.



Additional RMR via services:

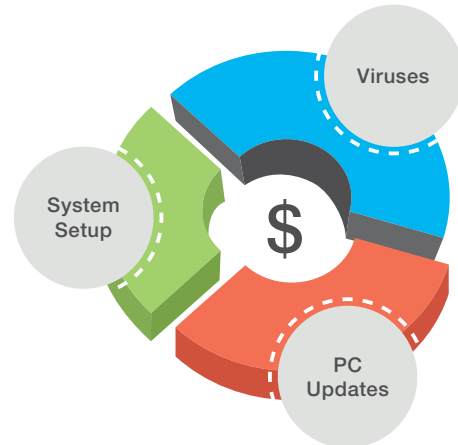
Embedded (optional) Remote Management Console - RMC is a Re-occurring Monthly Revenue portal to provide remotely managed access control and services. Extend your ability to manage clients fast and efficiently. View and access one or many systems through one portal with one click. RMC enables management from anywhere with any smart device. It is accessible through standard browser utilizing industry SSL and hand shake. RMC eliminates set-up of remote software and enables faster support.

LOWER TOTAL COST OF OWNERSHIP FOR CUSTOMERS

Better Profitability for the Dealers

Market leading capabilities & value targeting entry-level to mid-market access control applications. Our technology focus drives profitability in the “sweet” spot of installations. Thanks to e3 series’ lower cost for installation, lower cost for support and RMR platform, e3 sells more jobs.

- Faster to setup, simple to maintain
- Embedded Linux Operating System (OS)
 - MVP (Minimized Virus Potential)
 - No Microsoft update dependencies
- Independent network, server, and dedicated workstation hardware are not required
- Includes SQL database engine; no add-on database software licenses required
- Browser managed eliminates the need to load client licenses
- Common hardware reduces installer training and inventory cost
- Common software user interface means reduced training costs
- Open platform allows for cost-effective integration with other technologies,
- Flat cost for replacement / service hardware.



Software Feature Comparison	Essential™	Elite™	Entry
Dashboard	•	•	
Graphic floorplans	•	•	
Card decoder	•	•	•
First-in-unlock rule	•	•	•
Manager first rule	•	•	•
2-man rule	•	•	•
Portal unlock scheduling by time	•	•	•
Multiple holiday schedules	•	•	•
Multiple language support	•	•	•
Audit trail	•	•	•
Toggle/Passage	•	•	•
CSV file import tool	•	•	•
Built-in reports	•	•	•
One time events		•	•

Threat Level Management

-Alters access control system behavior globally		•	
-Threat levels		5	
Network-secure API for external application integration		•	
Distributed Redundant Database architecture (DRD)		•	•
User-definable fields	5	10	32
Maximum concurrent web users	8	16	16

LINEAR E3 SERIES OVERVIEW OF SYSTEM FEATURES

e3 Essential

The entry-level value leading 1–4 door system with immediate expansion capability to 4-doors / 8-readers (no additional hardware is needed to expand doors).

- System easily expands capabilities via License-To-Go—grow your capabilities as your needs change.
- Essential: Housed in a compact plastic enclosure
- Essential Plus: Housed in a steel enclosure; includes supervised AC battery back-up
- Easily scalable via software upgrade keys to higher-capacity e3-Series eMerge Elite models
- UL 294 Certification (Plus and Standard model)



e3 Elite

- Feature rich system designed for 4 - 128 multi-door, multi-site systems
- Elite ships starting with door license; expandable up to 128-doors
- Includes Distributed Redundant Database (DRD) architecture
- More users, doors, readers, online transactions and overall capacity
- Advanced access control features & capabilities
- Centralized and/or distributed hardware
- X86 VM version for hundreds of additional doors and sites

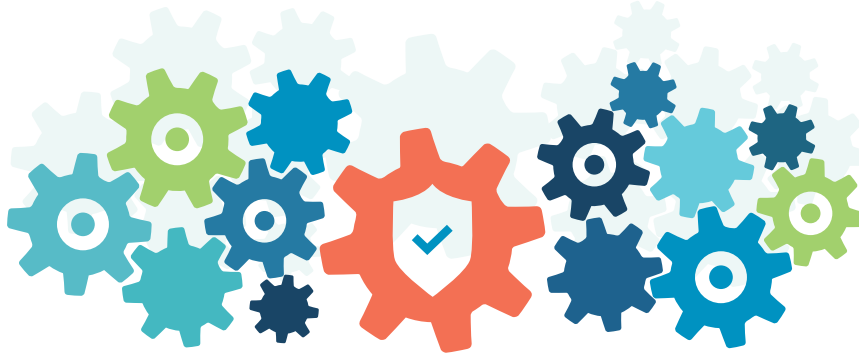


Entry Series

- Entry ships starting with 2 doors; expandable up to 36-doors
- Includes 4 in/out readers
- Includes MegaCode Receiver, TTY Port, Power Transformer and mounting hardware
- Works with all types of 2 wire telephony
- Remote management capable
- Integrated Networking / TCIP Port, RS485, RS422 Port and TTY Port
- Durable ArmorTech polycarbonate and metal housing options



Capabilities that Outshine Other Systems



Common Features

- Shared hardware and software architecture across all e3-Series
- Reliable, IT-friendly embedded Linux operating system
- SQL database with optional API available (Elite only)
- Intuitive quick-start wizard
- Browser-based management enables system status and updates from any place, on nearly any browser
- Easily upgradable to incorporate future e3 technology integrations
- UL 294 Certification



Hardware Features

- High-speed, 1GHz processor handles multiple simultaneous users and more than 30 transactions per second
- Long-term event storage via micro-USB card and FTP back-up
- Optional Power over Ethernet (PoE)
- Controller and Expansion Node enclosure options:
 - Small footprint ruggedized plastic enclosure
 - All metal enclosures include supervised AC battery backup system
- Step-up Power Supply (integrated and stand-alone)
 - 10Amp - with Step-up Regulators provides both 12 and 24 VDC at the same time
 - Designed to lower the cost of installation by eliminating the conduit, interconnected wiring to power locks and auxiliary

Software Features

- Mobile-friendly user interface
- Set-up wizard
- Dashboard displays full system status-at-a-glance including:
 - Event and activity log
 - Customizable door diagrams/floor plans
 - Remote door lock and unlock with status view camera's, photo id's and defined events with acknowledgments
- Time-saving and convenient features:
 - Integrated card decoder tool
 - Dynamic event filtering
 - Built-in audit-trail
 - Automatic daily data backup
 - Built-in documentation library
 - CSV flat file database import and export
 - E-mail, text message notifications
 - Simple, easy-to-use predefined reports
 - Micro SD or FTP-based storage

LINEAR E3 SERIES ORDERING GUIDE



1 Family - Module

- ES - Essential
- EL36 - Elite
- EC - Entry Standalone
- EN - Entry Networked
- EN-EXN - Expansion Node
- EV - Elevator Module
- EN-ACM - Access Control Module

2 Select Screen Size (Entry)

- 0 - no screen
- 1 - 1" monochrome
- 2 - 2" monochrome
- 4 - 4.3" inch color
- 7 - 7" inch color touch
- 10 - 10" inch color touch

EN-2A4B

2 Select Module Door Capacity

- 1 - 1 door
- 2 - 2 door
- 4 - 4 door

3 Select Enclosure Type

- C - Compact Plastic
- A - ArmorTech™ Polycarbonate
- M - Steel
- B - Board Only

4 Select Reader Bundle

- B - Reader bundle matches module door capacity (1, 2, or 4)
- No "B" at the end of the model number indicates no readers included

Additional Options & Accessories

MODEL	DESCRIPTION
ACM Modules (to add into existing enclosures) Elite	
ACM2D	2-Door ACM Module
ACM4D	4-Door ACM Module
ACMEV	Elevator ACM Module
ACM2DB	2-Door ACM Module w/2-Reader Bundle
ACM4DB	4-Door ACM Module w/4-Reader Bundle

License & Reader Combination Packages

ES-1DL	Essential 1-door license
ES-1DLB	Essential 1-door license with 1-reader bundle
EL36-4CB	Elite-36 4-door system w/4-reader bundle, compact
EL36-4MB	Dashboard

Add-on Licenses

ES-U36	Elite-36 4-door system w/4-reader bundle
EL-U64	Upgrade license for Elite 36 to 64-door capacity
EL-U96	Elite 64 to Elite 96 upgrade
EL-U128	Elite 96 to Elite 128 upgrade
EL-BADGE-L	Elite Badging License

Extended Warranties

E3-EW5	Extended 5-year warranty (per board)
--------	--------------------------------------

MODEL	DESCRIPTION
Power Options	
E3-POE	PoE Module - adds PoE capability
PIP12VDCRU	Plug-in-Power Supply 12V DC 24 Watt
PIP12V60W	Plug-in-Power Supply 12V DC 60 Watt

Proximity Readers

2-N-1Prox HAF / HAS	Essential 1-door license
2-N-1Prox HAS	HID, HWID, Securekey compatible 125 kHz
WOR	Wiegand Output Receiver

Cards & Key Fobs

ProxCard II	Wiegand 125 kHz Proximity Card
ProxKey	HID, HWID, Securekey compatible 125 kHz
ACT-31C & 34C	1 or 4 Channel Block Key Ring Transmitter
ACT-31C & 34C	1 or 4 Channel Block Key Ring Transmitter

REX

EZ-Rex	Easy Touch Request to Exit (Heavy Duty)
--------	---

Stand-Alone Power Supplies

PS124D-02A4	12 VDS, 2 Amps
PS124D-05A4	12 VDS, 5 Amps
PS124D-10A8	120 VAC, IEC Cord

LINEAR E3 SERIES SPECIFICATION COMPARISONS

e3	Essential™	Elite™	Entry EC	Entry EN
Processor	1GHz/All Models		16 GHz	
On-board RAM	512MB DDR2 (333MHz)		1 Gig DDR 3C	
Storage	4 GB Micro SD	8 GB Micro SD	8 GB Micro SD	16 GB Micro SD
Operating System	Embedded Linux			
Maximum Concurrent Administrators	8	16	8	16
Transactions Per Second Per Module	30+			
Doors/Portals	1 to 4	128	2	36
Maximum Readers (in/out)	8	256	4	72
Expansion Modules	N/A	32	N/A	8
Elevator Control Modules	N/A	5	N/A	
-Elevators / Cabs	N/A	5	N/A	
-Floors / Module	N/A	36	N/A	
-Elevator Groups / Module	N/A	16	N/A	
Inputs	Up to 12	8 to 280	8	Up to 126
Outputs	Up to 8	4 to 140	4	Up to 72
Maximum Users / Cardholders / Dir	1,000	5,000-20,000	1,000	10,000
Access Cards	8,000	120,000	5,000	120,000
Cards Per Person	12	32		
UL Certification	UL294 for Standard and Plus models	UL294 Series 6		
Badging	N/A	Optional	N/A	
Antipasspack	N/A	Timed	N/A	
Card Types	Toggle, One Time, First In Manager, 2 Man Rule, Passage, Relock, Extended Unlock, Latchkey			
Scheduled One Time Events / Outputs	N/A	50	150	
Card Formats / Integrated Card Reader	32/Yes			
Total System Access Levels	25	250		
Time Specs (schedules)	25	128	250	
Holidays	30	60	30	60
Online Transactions	15,000	30,000	10,000	50,000
User Defined Data Fields	5	10	10	10

Optional RMC - Remote Management Console



REMOTE ACCESS FOR MANAGED AND SELF-MANAGED

- 1. Central with Total Mobility:** Securely access and manage control systems anywhere and anytime from one location - yours
- 2. Save Time & Money:** Web-based secure access without preinstalled desktop software supports embedded access control and video platforms
- 3. Be There, Right Now:** Manage systems remotely, programming and software setup personnel do not need to be on-site
- 4. Focus on Your Work, not Getting it to Work:** One GUI with easy-to-use dashboard and toolbar will increase customer support speed and reduce support costs

Always Connected—Always In Control—Always New Opportunities

SECURE REMOTE CONNECTIVITY FOR MANAGED ACCESS CONTROL SYSTEMS

RMC 2.0 incorporates encrypted firewall tunneling technology linked to remote back-end UI to protect remote access to your connected devices.

RMC 2.0 solution gives dealers a single, easy-to-use graphical-user-interface (GUI) to view all connected panels, assign role-based on both user and device and connect to each one with a simple click. It provides both IP video and managed access control systems access to web-based applications, and provides dealers with resources to create highly secure, value-added services to end-users.

Key Features

- Leverages most existing networks
- Demonstrated firewall-friendly web socket protocols
- Secure, encrypted (SSL/TLS) connections
- Assign access to one or many systems. Group systems for easy of management.
- Forward with variety of TCP/IP based protocols, inc. HTTP(S)
- Highly scalable up to thousands
- Ability to customize dealer portal
- API available for third party integration and customization

Key Benefits

- Mobile friendly user interface: program and manage anywhere, anytime
- Reduce the need to send technicians on-site to perform routine system maintenance and troubleshooting
- Increase customer support speed and satisfaction
- Generate recurring monthly revenues by offering value-added services